

PART OF N.E. 1/4 SEC. 22, T. 5 N., R. 2 W., S. L. B. & M.  
**GOODFELLOW SUBDIVISION NO. 3**

239

LOTS 1-7, 24-31

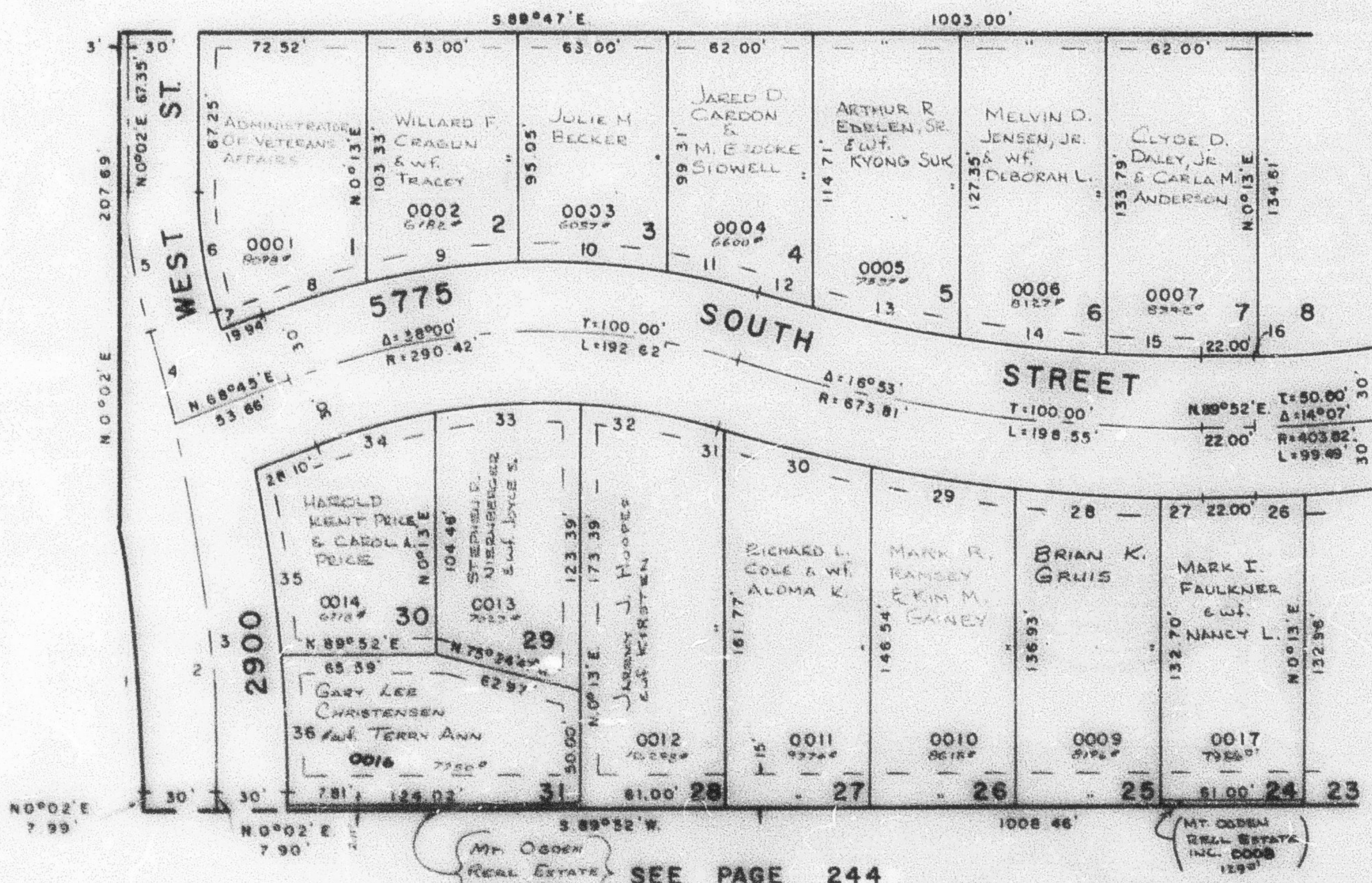
TAXING UNIT 41

IN ROY CITY

PREFIX 09-239

SCALE 1" = 50

SEE PAGE 87



SEE PAGE  
85-3

SEE PAGE 240

SEE PAGE 244

**CURVE DATA**

1	2	3	4	5	6	7	8	9	10	11	12	13	14
Δ: 10°00'09"	18°32'09"	13°12'27"	3°19'42"	16°32'09"	16°32'09"	0°34'47"	8°17'36"	11°22'51"	11°18'35"	7°01'00"	2°11'49"	5°58'00"	5°32'58"
R: 638.17	688.17	688.17	688.17	208.45									
L: 114.88'	198.61'	158.93'	39.98'	59.58'	50.93'	7.27'	46.38'	93.65'	63.25'	39.24'	24.69'	63.30'	52.36'
T: 114.75'	100.00'	78.67'	19.99'	30.00'									
LC: 114.75'					50.75'	7.27'	46.34'	93.54'	63.14'	39.22'	24.68'	63.28'	52.33'
N4°58'01"W					N 8°14'05"W	N 16°12'46"W	S 72°53'46"W	S 82°44'01"W	N 89°55'17"W	N 75°45'30"W	N 74°20'54"W	N 78°15'16"W	S 93°51'16"W
15	16	26	27	28	29	30	31	32	33	34	35	36	
Δ: 5°30'13"	0°05'59"	2°45'09"	1°28'45"	4°58'35"	5°51'27"	5°06'49"	0°17'24"	12°53'41"	13°28'15"	11°38'03"	6°28'38"	4°38'48"	
R: 58.37'	0.65'	20.84'	18.17'	61.14'	61.72'	62.80'	3.58'	58.81'	61.23'	52.88'	61.19'	55.24'	
L: 58.38'	0.65'	20.84'	18.17'	61.12'	61.70'	62.78'	3.58'	58.49'	61.05'	52.79'	61.15'	55.23'	
N 88°22'54"W	S 88°49'50"W	N 88°29'26"E	S 88°23'37"E	S 88°09'46"E	S 81°08'55"E	S 78°08'47"E	S 73°23'42"E	S 73°41'3"E	N 81°07'1"E	N 74°34'02"E	N 75°51'07"W	N 2°17'24"W	

7' UTILITY & GRAINAGE EASEMENTS  
 EACH SIDE OF PROPERTY LINE AS  
 INDICATED BY DASHED LINES

FOR COMPLETE ENG. DATA  
 SEE ORIG. SET. PLAT IN  
 BOOK 23, PAGE 44